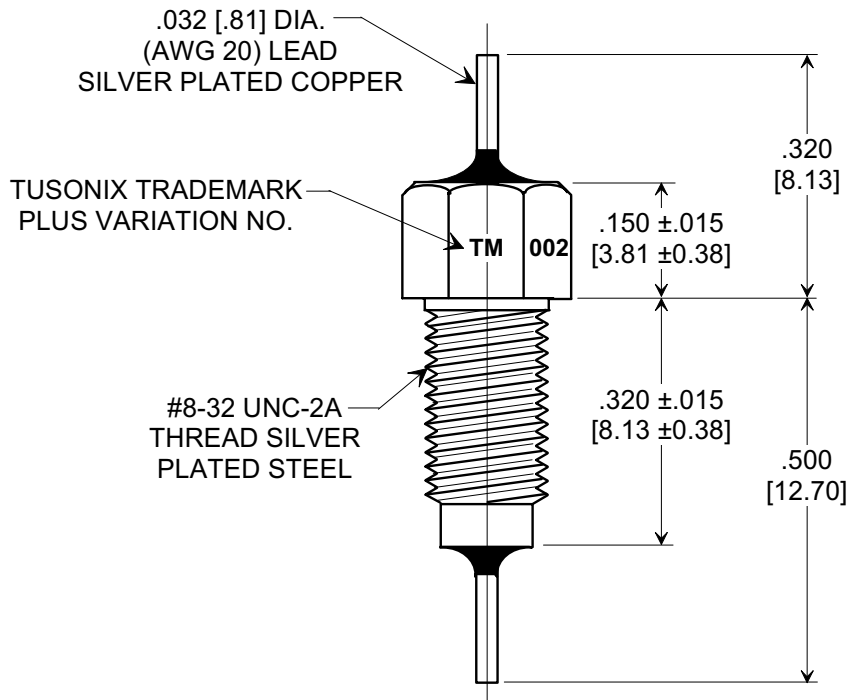
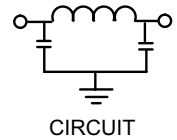
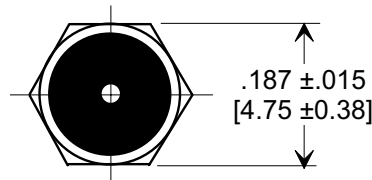
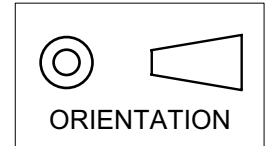


MARKETING SALES DRAWING
DIMENSIONS IN INCHES - DO NOT SCALE THIS DRAWING
DIMENSIONS IN METRIC []

Electrical Testing
per Tusonix standard
test plans and Mil-Std-202
Test Methods.



NOTES:

- TUSONIX STANDARD PART NUMBER: 4251-002.
TUSONIX RoHS COMPLIANT PART NUMBER: 4251-002 LF.
CUSTOMER MUST SPECIFY STANDARD OR RoHS PART NUMBER WHEN ORDERING.
- PART MARKING: TRADEMARK AND VARIATION NUMBER ON HEX FLATS.
STANDARD PART: BLACK INK. RoHS PART: GREEN INK.
- SUPPLIED WITH SILVER PLATED COPPER ALLOY HEX NUT AND INTERNAL TOOTH LOCK WASHER.

| MIN. CAP. | 125°C WORKING VOLTAGE | CURRENT Vdc | IR MIN. | DWV | MINIMUM NO LOAD INSERTION LOSS (dB) @ 25°C PER MIL-STD-220 | | | | |
|-----------|-----------------------|-------------|---------|---------|---|--------|---------|-------|--------|
| | | | | | 1 MHz | 10 MHz | 100 MHz | 1 GHz | 10 GHz |
| 12,000 pF | 125 VDC | 10 A | 10 G Ω | 500 VDC | 5 | 28 | 65 | 70 | 70 |

| | | | | | | | |
|--------------|---|-------------|--|----------|--|--|-----------------|
| X-2015 Rev-0 | REVISION RECORD | | | | --TOLERANCES-- Unless Otherwise Specified | Title | |
| | Original Release C.O. 6611 | 1 | RDN TO COMP FMT & ADDED .015 TOL 3 PLCS. S.M. 02-28-02 | 2 | | MULTILAYER BUSHING STYLE EMI FILTER | |
| | DIM'S REVISED, TITLE CHNGD. E.C. 05-26-92 | 6667 | | 3 | Drawn S.M. 02-28-02 Scale 4 X | | |
| | | | | 4 | Approved T.C. 02-28-02 | | |
| | | | | | TUSONIX TUCSON, ARIZONA | A | 4251-002 |