

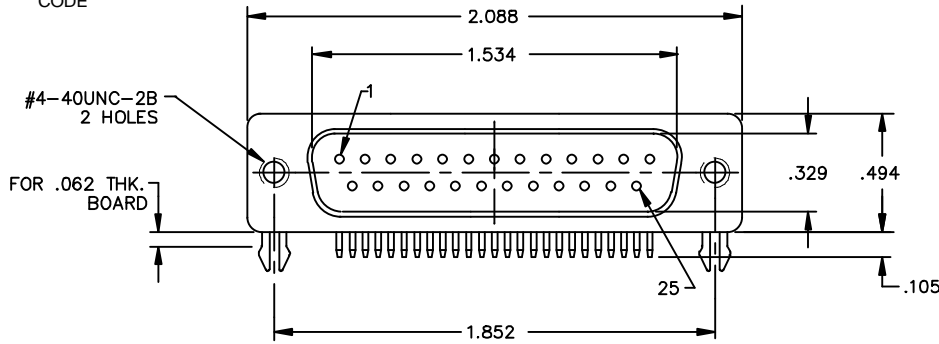
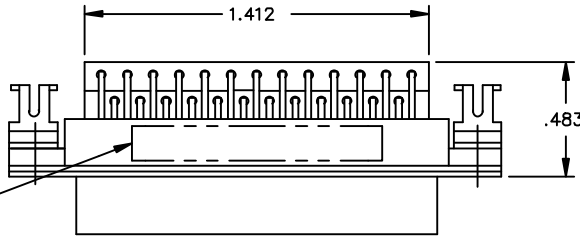
| SPECIFICATIONS | | |
|-----------------------|------------------|---------|
| OPERATING TEMP. RANGE | -25°C TO +125°C. | |
| WORKING VOLTAGE | 85°C. | ---- |
| | 125°C. | 100 VDC |
| CURRENT | 5 AMPS MAX. | |
| POSITIONS | 1 THRU 25 | |
| SCHEMATIC | | |
| CAPACITANCE† | SEE CHART | |
| D.W.V.† | 300 VDC | |
| I.R.† | 1 G OHM MIN. | |

† ALL TEST CONDITIONS AT 25°C. 50% RELATIVE HUMIDITY.
 CAP. PER MIL-STD-202 METHOD 305, 1.0 VRMS MAX. 1KHz.
 D.W.V. PER MIL-STD-202 METHOD 301, 1-5 SEC. 50 mA MAX.
 I.R. PER MIL-STD-202 METHOD 302.
 I.L. PER MIL-STD-220, NO LOAD CONDITION.

| SCI PART NO. | CAPACITANCE | | MINIMUM INSERTION LOSS DECIBELS - (db) | | | |
|----------------|-------------|-----------|--|---------|---------|-------|
| | VALUE | TOLERANCE | 20 MHz | 100 MHz | 500 MHz | 1 GHz |
| 56-522-014-GBL | 1500 pF FT | ±30% | 8 | 21 | 35 | 41 |

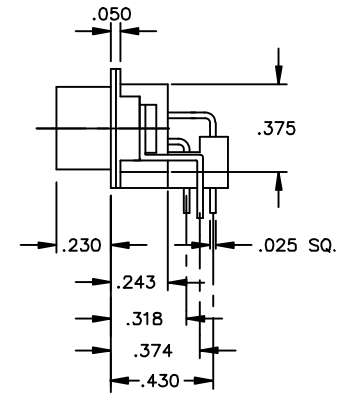
MARKING

SCI 56-522-014-GBL
 XXXX XXXXXX
 DATE CODE
 MANUFACTURING CODE



NOTE:

- 1. SHELL: STEEL, TIN PLATED.
- 2. INSULATOR: UL 94V-0
- 3. CONTACT; COPPER ALLOY, .000015 GOLD PLATED IN PIN CONTACT MATING AREA.



| | | | | | | | | | | | | | | | | | | | | | | | | | | | | | | | | |
|--|--|--|--|--|--|--|--|--|--|--|--|--|--|--|--|--|--|--|--|--|--|--|--|--|--|--|--|----|---|---|--|--|
| | | | | | | | | | | | | | | | | | | | | | | | | | | | | 12 | UNLESS OTHERWISE SPECIFIED DIMENSIONS ARE IN INCHES. DO NOT SCALE. | TOLERANCES UNLESS OTHERWISE SPECIFIED Fractions ± 1/64 Dec. .xx± Dec. .xxx± .015 Angles ±0° 30' CODE IDENT. NO. OLS P2 | SPECTRUM CONTROL INC. Dwn. J. Kauffman Ckd. 1-18-08 Apvd. P. Grunauer Sheet 1 of 1 | ERIE, FAIRVIEW PENNSYLVANIA Description 25 POSITION LOW PROFILE, PIN/RT. ANGLE FILTERED CONNECTOR B 56-522-014-GBL |
| | | | | | | | | | | | | | | | | | | | | | | | | | | | | 11 | | | | |
| | | | | | | | | | | | | | | | | | | | | | | | | | | | | | | | | 10 |
| | | | | | | | | | | | | | | | | | | | | | | | | | | | | | | | | REV. CHANGE NOTICE |
| | | | | | | | | | | | | | | | | | | | | | | | | | | | | | | | | REV. I.D. |

