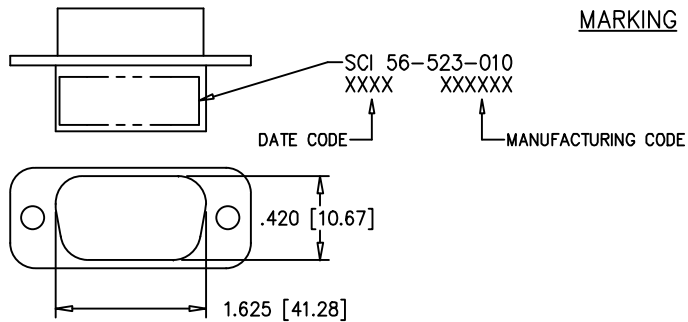
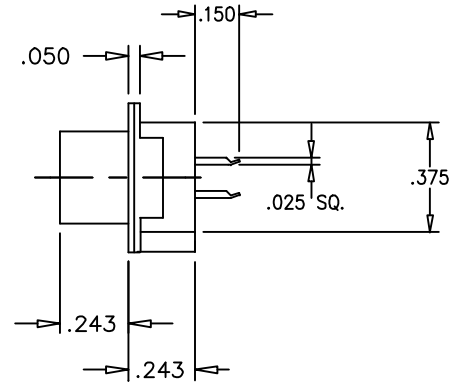
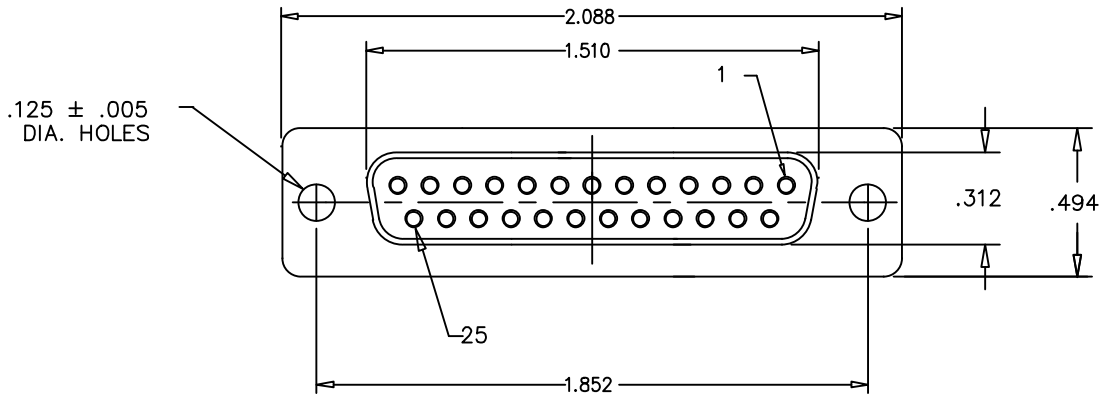


CONN SIZE	FILTER DESIGNATION	FILTER CIRCUITS	CAPACITANCE		3 dB MAX CUTOFF FREQ (MHz)	DIELECTRIC WITHSTANDING VOLTAGE	CONTACT RATING	CONTACT RESIST	WORKING VOLTAGE DC -25°C TO +125°C	MINIMUM INSERTION LOSS-DECIBELS (dB)			
			VALUE	TOLERANCE						20 MHz	100 MHz	500 MHz	1 GHz
25	010	FT	120pF	+30% -30%	40	300 V	5 AMPS	.010 OHM MAX	100 VDC	-	3	15	21



- NOTES:
1. SHELL: STEEL, TIN PLATE
  2. INSULATORS: UL94V-0
  3. CONTACTS: COPPER ALLOY; .000030 GOLD IN SOCKET CONTACT MATING AREAS



THIS DOCUMENT CONTAINS PROPRIETARY INFORMATION AND IS COPYRIGHTED. EXCEPT WITH THE WRITTEN PERMISSION OF SPECTRUM CONTROL INC., OR ITS SUBSIDIARIES, SUCH INFORMATION SHALL NOT BE PUBLISHED OR DISCLOSED TO OTHERS OR USED FOR ANY PURPOSE AND THIS DOCUMENT SHALL NOT BE DUPLICATED IN WHOLE OR IN PART.

REV. NO.  
5  
CHANGE NOTICE  
CN199114

UNLESS OTHERWISE SPECIFIED DIMENSIONS ARE IN INCHES.

CADD SCALE: FULL  
PLOT SCALE: 2x

TOLERANCES UNLESS OTHERWISE SPECIFIED  
Fractions ± 1/64

Dec. .xx±  
Dec. .xxx± .015  
Angles ±0° 30'

CODE IDENT. NO.  
33095



CONNECTOR PRODUCTS DIVISION  
ERIE, PENNSYLVANIA

SPECTRUM CONTROL INC.

Dwn. KRZALIC  
Date 12/11/00

Apvd. K WOOD

Sheet 1 of 1

Description 25 POSITION  
LOW PROFILE, SOCKET/PCB TAIL  
FILTERED CONNECTOR

B 56-523-010

Quality Products From The Specialists In Electro-Magnetic Compatibility