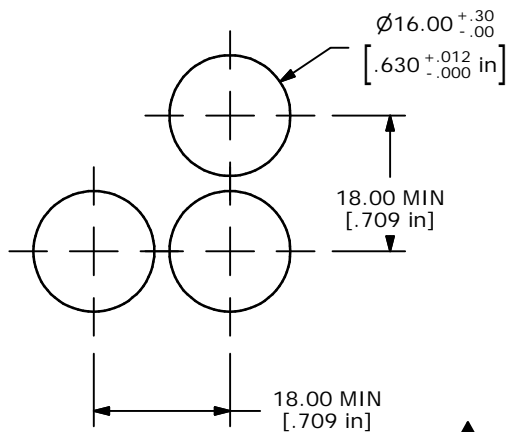
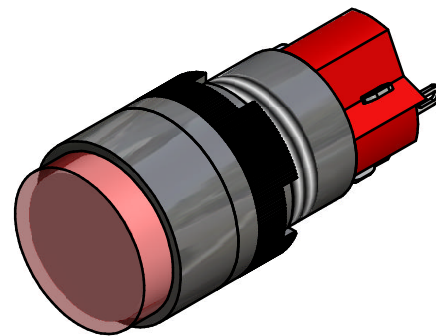
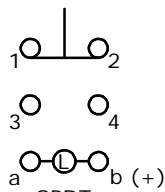
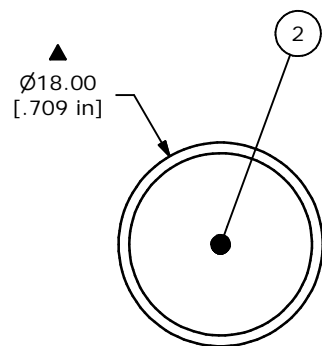


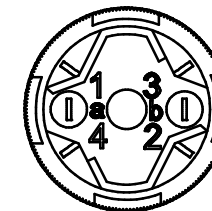
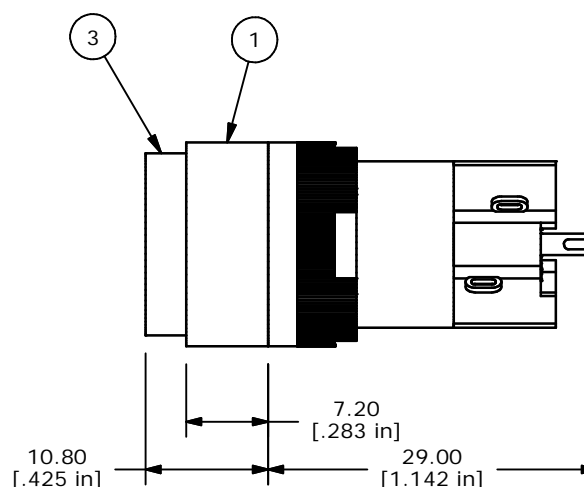
ITEM	QTY	PART NUMBER	DESCRIPTION
1	1	F040009	D16OAR11
2	1	F050412	50-004-12 110VAC RED NEON
3	1	F050104	50-001-04 CONCAVE RED TRANSPARENT



PANEL MOUNTING



CONTACT CONFIGURATION



NOTE:

1. ALL DIMENSIONS IN MM [INCH]
2. GENERAL TOLERANCE: X.X=±0.4
X.XX=±0.25
3. TERMINAL NUMBERS FOR REF ONLY
4. MECHANICAL LIFE: 2,000,000 OPERATIONS
5. INSULATION RESISTANCE: 1,000 MILLI-OHM MIN.
6. OPERATING TEMP.: -25°C to 55°C
7. LAMP VOLTAGE: 110VAC RED NEON
8. ▲ DENOTES CRITICAL PARAMETER.



E-SWITCH®

REV	PCR NO	DESCRIPTION	DATE	BY
B	14810	CORRECT NOTE 7	3/30/05	AR
A	14732	RELEASED FOR PRODUCTION	3/4/05	AR

TITLE D16OAR11FREDRED

SCALE	DATE	DR	DWG	REV
2:1	3/4/05	AR	XF0632P	B

THE INFORMATION CONTAINED IN THIS DOCUMENT IS PROPRIETARY TO E-SWITCH AND IS NOT TO BE COPIED OR TRANSFERRED